

Diablo Canyon Permit Package

Avila Valley Advisory Council

May 10, 2021

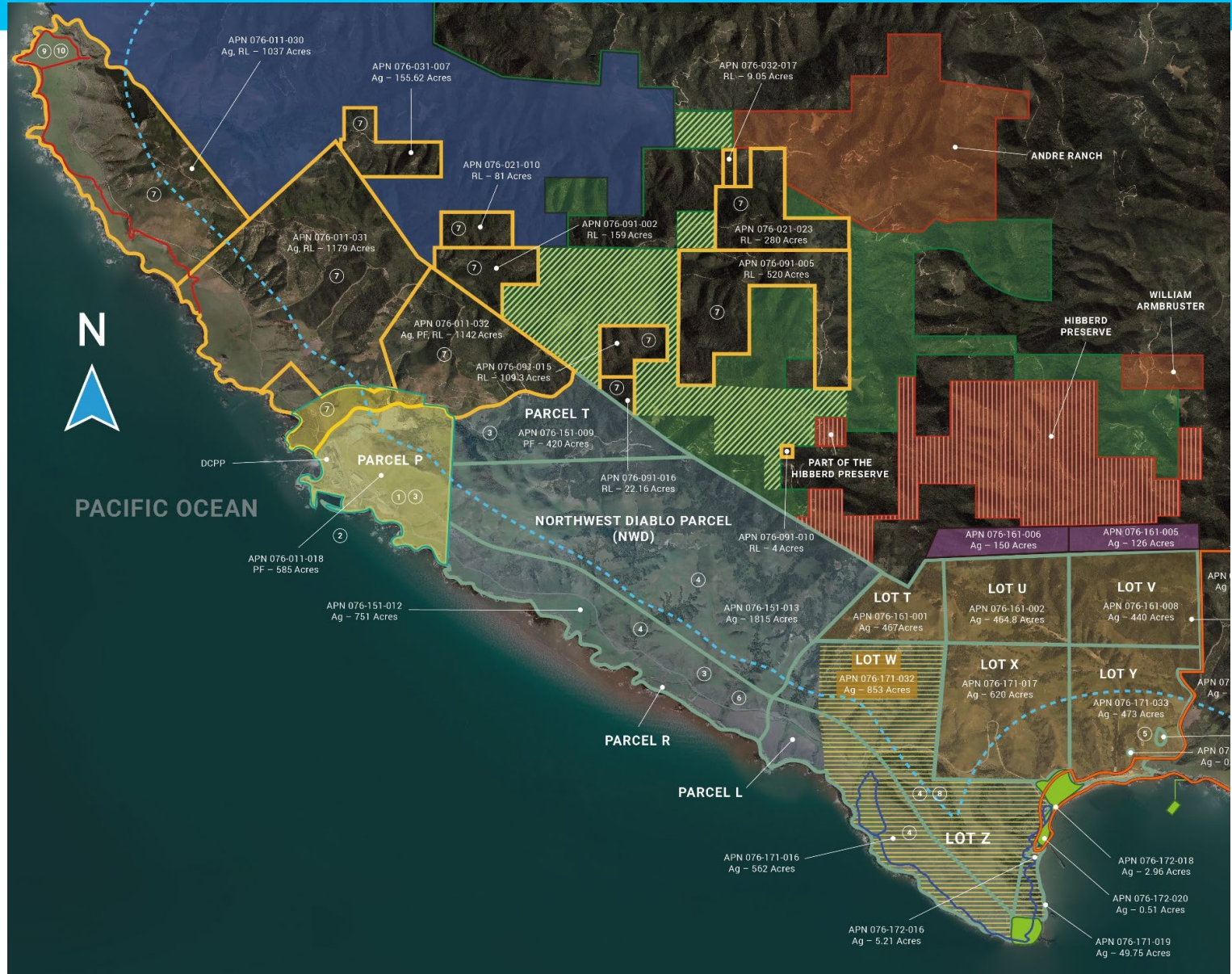


Together, Building
a Better California



Background

DCPP's Decommissioning Focus is the NRC-licensed 750-acre site (partially within coastal zone)



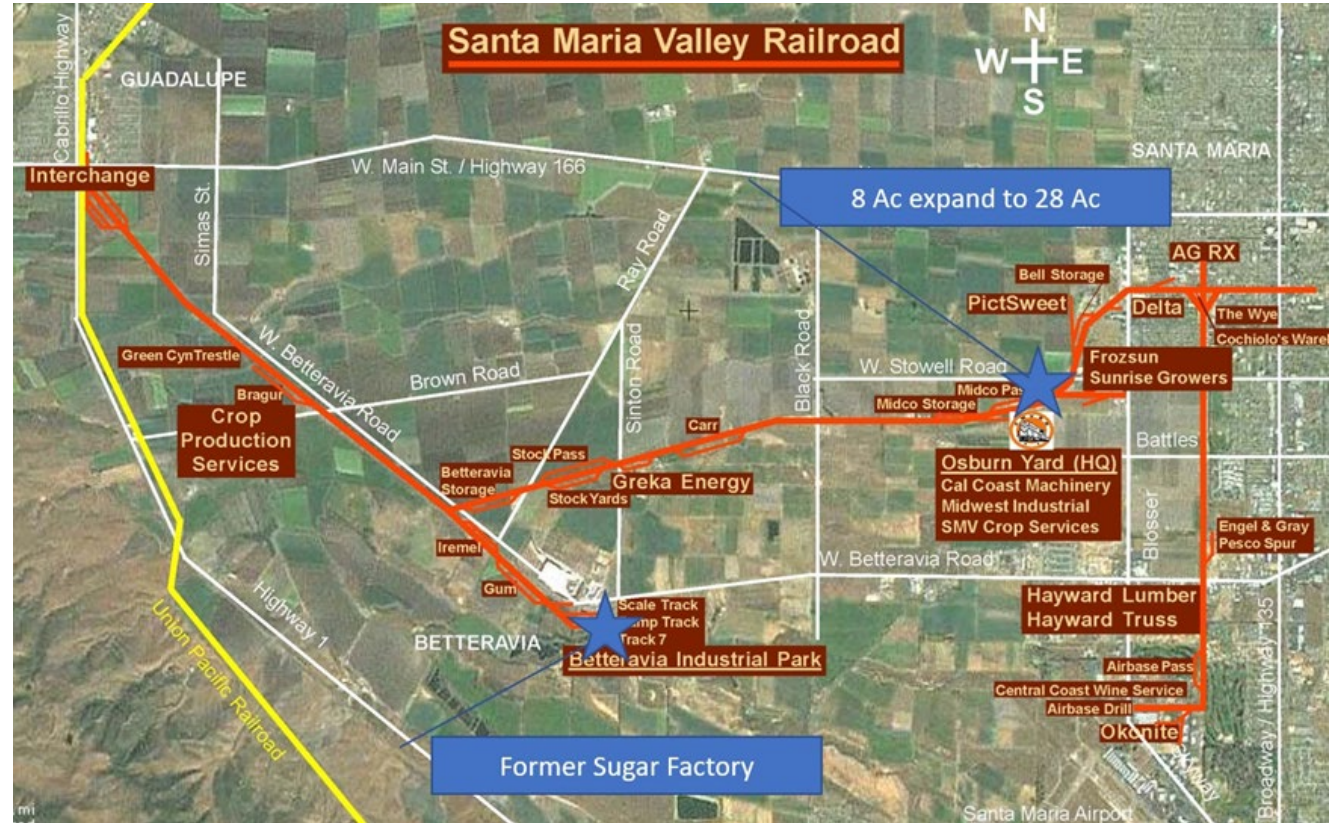
NRC: Nuclear Regulatory Commission



Potential Off-site Facilities



Pismo Beach Materials Handling Facility



Santa Maria Railyard Facilities



Need and Timing

Based on the locations and activities, key state/local requirements are:

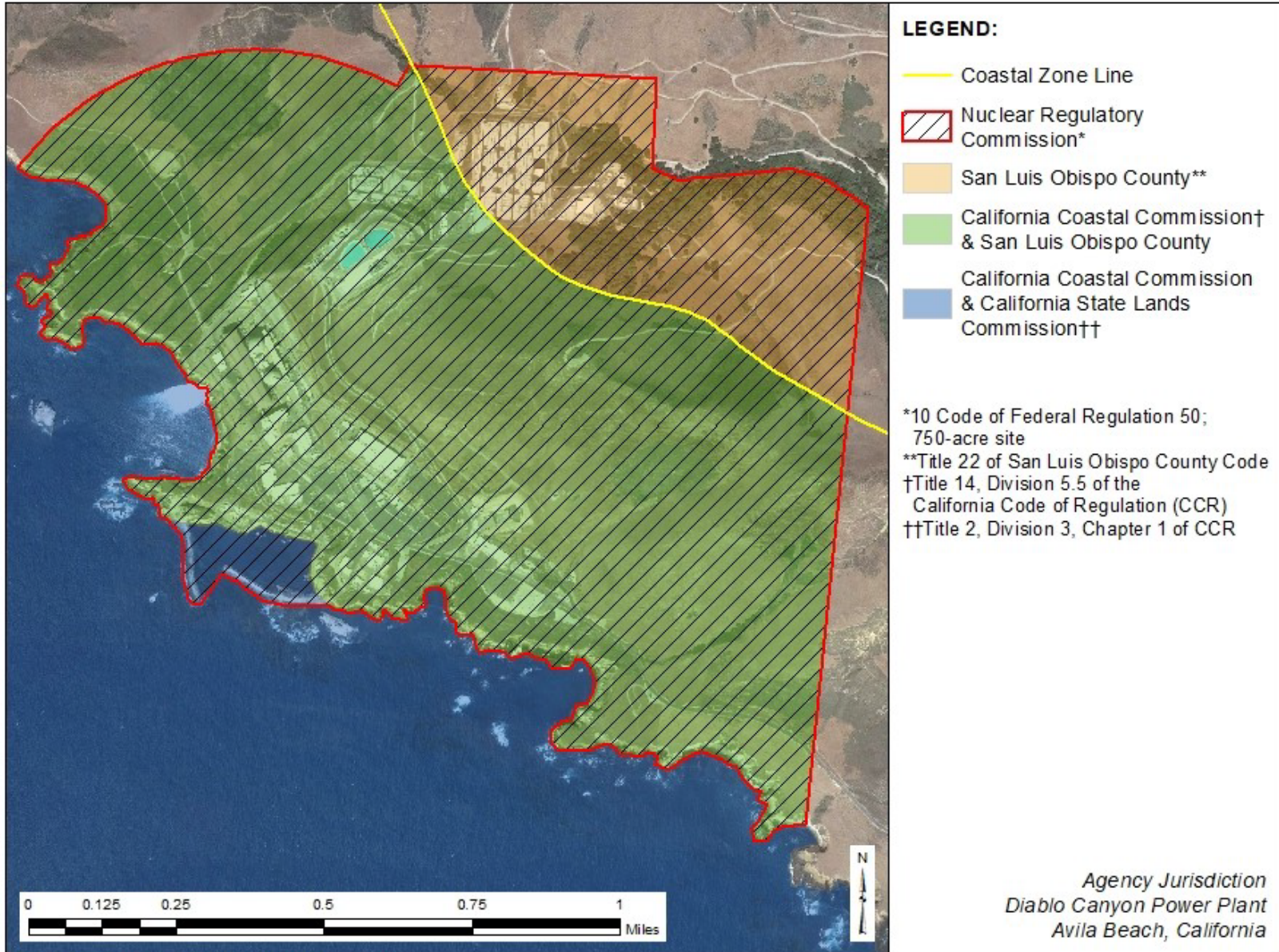
- DP: Section 23.02.034 of the County’s Coastal Zone Land Use Ordinance (CZLUO)
 - Enable public review of significant land use proposals and ensure the proper integration into the community
- CDP: Section 23.01.031 of CZLUO
 - Placement or removal of material in the Coastal Zone in accordance with the California Coastal Act
- CUP: 22.62.060 of County’s Inland Land Use Ordinance
 - Significant land use proposals outside the Coastal Zone

PG&E submitted a joint (DP/CDP and CUP) application submittal on March 24, 2021

- Timing supports obtaining permits prior to Unit 1 shutdown → decommissioning pre-planning goal to ensure no delays in commencement of decommissioning



Agencies' Jurisdictions of DCPP Site





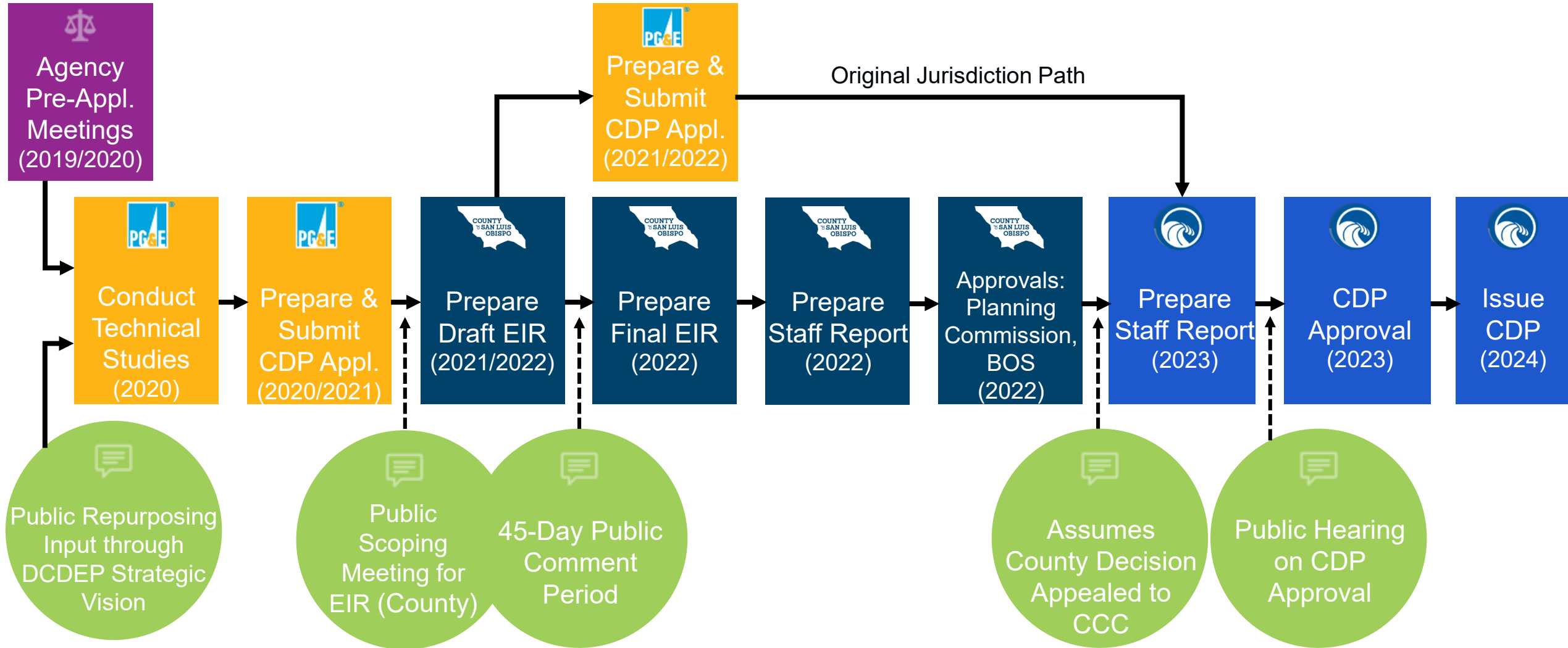
Agency Approval Process

BOS: Board of Supervisors
 CCC: California Coastal Commission
 CDP: Coastal Development Permit
 DCDEP: Diablo Canyon Decommissioning Engagement Panel
 EIR: Environmental Impact Report

Application Preparation: 2.5 yrs

Application Review: ~1 yr

CDP Approval: 2 yrs





Application Development Process

Past Similar DCPP Submittals

- Diablo Canyon Independent Spent Fuel Storage Installation (DC ISFSI) CDP
- Steam Generator Replacement Project (SGRP) DP/CDP/CUP

Successful Process

- Developed the applications using DCPP expertise with consultant support
 - Conducted targeted studies to support the application (e.g., biological resources)
- Obtained permits from County of San Luis Obispo (County) and, upon appeal, approval from the California Coastal Commission (CCC)
 - For SGRP, an original jurisdiction CDP was also obtained from CCC
- PG&E is using several members of the same consulting team that successfully prepared these applications



Experience: California Decommissioning Benchmarking

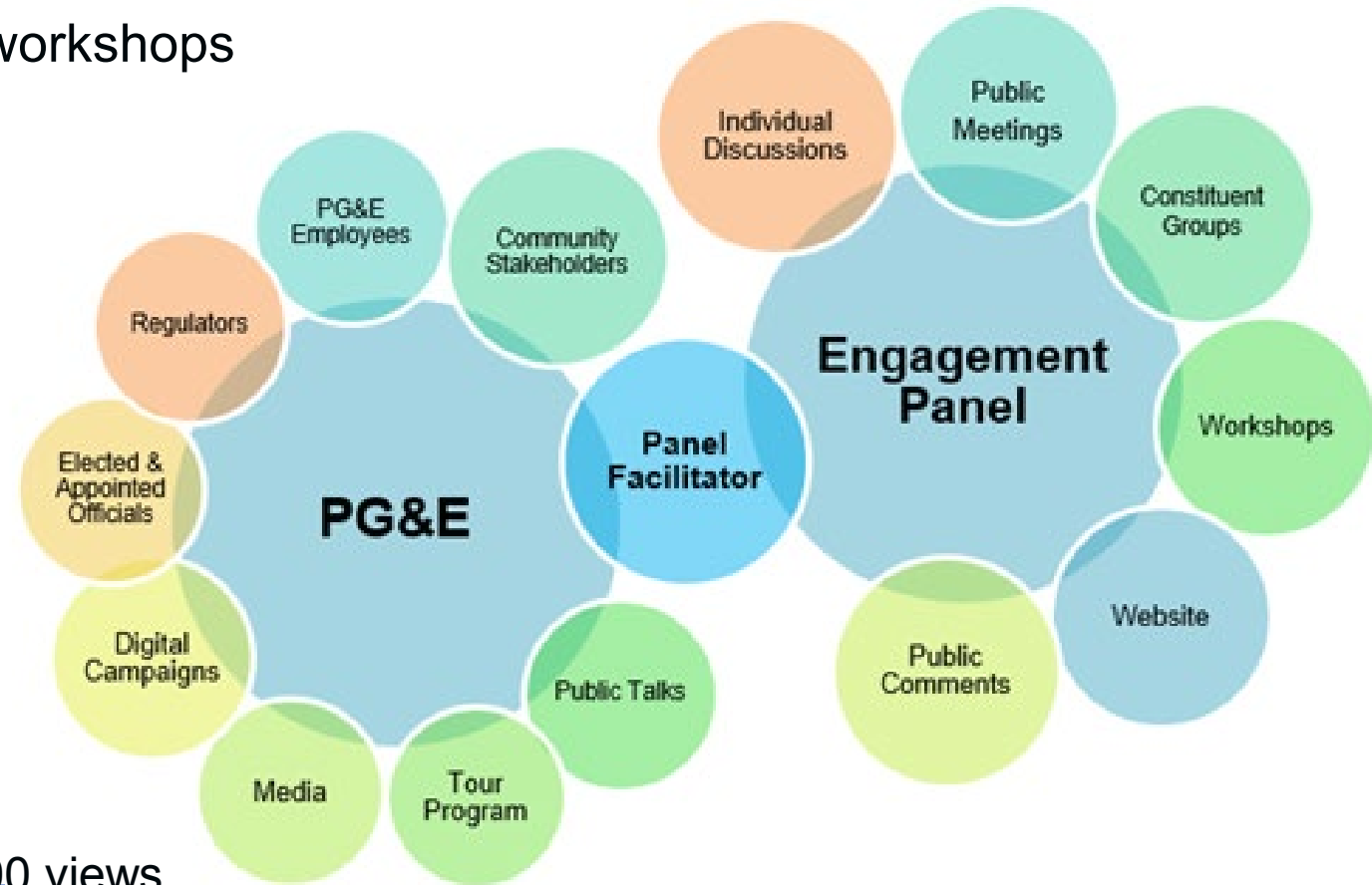
California Decommissioning CDP Applications

- PG&E team members reviewed the following:
 - CDP application for Decommissioning SONGS Units 2 and 3
 - SONGS Final Environmental Impact Report (FEIR) prepared by the California State Lands Commission (CSLC)
 - CCC CDP Staff Report for Decommissioning of SONGS Units 2 and 3
 - Humboldt Bay Power Plant Decommissioning, including Final Site Restoration CDP
- PG&E team members attended the following:
 - CSLC hearing for certification of the FEIR and approval of issuance of a lease for Decommissioning of SONGS Units 2 and 3
 - CCC hearing for issuance of the CDP for Decommissioning of SONGS Units 2 and 3
 - CCC hearing for issuance of SONGS ISFSI CDP



Ongoing Public Engagement: Thru Feb 2021

- 13 DCDEP public meetings and 7 days of workshops
- 2018 – Feb. 2021:
 - 263 tours with over 5,440 participants
 - Website visits
 - Speakers bureau:
 - 203 presentations
 - 12,900 people reached
- Tribal outreach is ongoing
 - yak tityu tityu yak tihini (Northern Chumash)
- COVID-19 mitigations:
 - Developed virtual tours: approximately 14,300 views
 - ✓ Pecho Coast Trail and Lighthouse; Lands; Marina; ISFSI
 - Enhanced website launched Feb. 12
 - Virtual presentations and public meetings



OVER 33,000 DIRECT CONTACTS

Application Overview





DCPP Decommissioning Application Objectives

- **Meets County application submittal requirements**
- **Provides information for County to prepare Environmental Impact Report (EIR)**
- **Reflective of 2018 Nuclear Decommissioning Cost Triennial Proceeding (NDCTP) proposed settlement to reduce costs through repurposing/reuse**
 - Retention of breakwaters
 - Retention of intake structure
 - Reuse of all clean concrete onsite
 - Balance of fill onsite – no need to import fill from offsite
- **Allows County to perform comparative analysis of impacts**
 - No project alternative
 - Intake structure removal alternative
 - Breakwater removal alternative
 - Minimum demolition alternative
 - Transportation alternative impact analysis:
 1. Barging
 2. Direct trucking
 3. Truck/rail via Pismo Beach
 4. Truck/rail via Santa Maria



DCPP Decommissioning Application Content

- **Transmittal letter**
- **Land use permit application**
- **Project description (PD)**
 - Phase I and II Decommissioning activities
 - Retention and reuse of breakwaters and intake structure
 - Alternatives
 - No project
 - Intake structure removal
 - Breakwater removal
 - Minimum demolition
- **Environmental impact assessments (EIA)**
- **Technical studies**

NOTE:

- Phase I activities are analyzed at a project level (detailed)
- Phase II activities are analyzed at a program level (general)
- Phase III removed (ISFSI is a separate licensed/permitted facility; it will be its own project when removed)



DCPP Decommissioning Application – Facilities to Remain in Place



 FACILITIES TO REMAIN IN PLACE*



*THE PRIMARY AND SECONDARY ACCESS ROADS AND INTERNAL SITE ROADS WILL ALSO REMAIN IN PLACE, BUT ARE NOT OUTLINED



Phase I Decommissioning Activities

Spent fuel movement

- 2025 – 2029 (4 years per settlement agreement)

Site modifications

- Spent fuel pool island (NRC jurisdiction) / reduced once-through cooling
- Cold and dark power (NRC jurisdiction)
- Temporary site infrastructure changes

Building demolition

- 2026 – 2034
- Begin with non-nuclear buildings

Reuse of intake structure and breakwaters



Phase I Decommissioning Activities

Transportation of waste out of state

- 1) Barging
- 2) Direct trucking out of state
- 3) Truck/rail via Pismo Beach
- 4) Truck/rail via Santa Maria

Final Status Surveys

- Verify the site has been remediated and satisfies release criteria

Site restoration

- Removal of utilities
- Backfill and return existing grades to natural contours (no work within Diablo Creek)
- Re-vegetation/multi-year monitoring (5 years)



Phase II Decommissioning Activities

- **Soil remediation**
- **Final Status Surveys**
- **DCPP license termination**
- **Backfilling and regrading to natural contours**
 - Balance on site
 - Nearby borrow site for contingency
 - Reuse clean concrete and different blending ratios for different locations
- **Landscaping, planting, long-term stormwater management**
- **Relocate firing range near greater than Class C (GTCC) storage facility (near current garage)**



Project Alternatives

Phase I – no project

- SAFSTOR if permits not issued or conditions not acceptable to PG&E

Phase I – removal of intake structure

- Address change in impacts (bio, air quality, land use, noise, transportation)
- Describe change in water management approach

Phase II – removal of breakwaters

- Address change in impacts (bio, air quality, land use, noise, transportation)

Minimum demolition

- Address change in impacts (bio, air quality, land use, noise, transportation)
- Model employed at Rancho Seco



Key Takeaways

- Well-prepared document with agencies' collective input
- PG&E conducted numerous agency pre-meetings to gain alignment on the approach, technical studies, and schedule
 - PG&E conducted detailed technical studies prior to County submittal so findings could be included in EIA
 - Provides information for County to prepare EIR
 - PG&E initiated the agency working group of County, CCC, and SLC
- Level of detail and approach allows for greatest flexibility in decommissioning plans
 - Continuously addressing stakeholder feedback (e.g., DCDEP on transportation)
- The application will be updated when Santa Maria information is available
- Maintains decommissioning project schedule

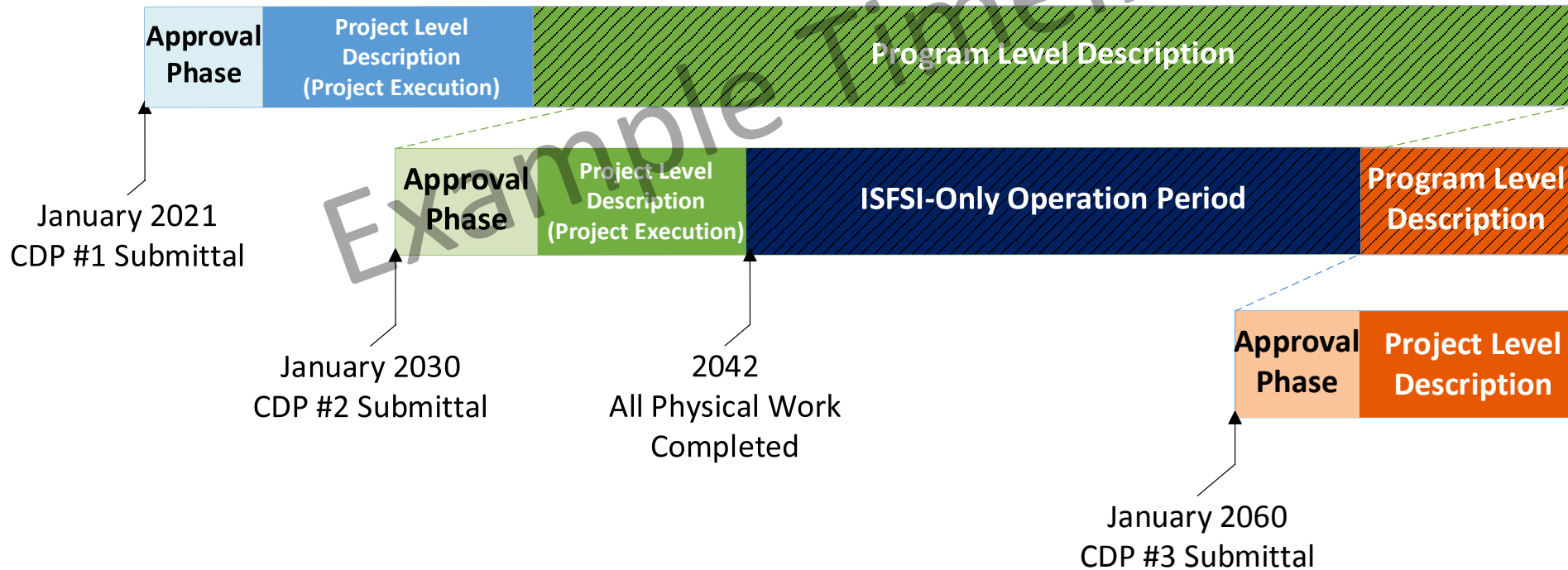


Permitting Phasing – Based on 2018 NDCTP

Submittal I:
Shutdown, Decommissioning,
and Initial Site Restoration

Submittal II:
Breakwater and Intake/
Discharge Decommissioning

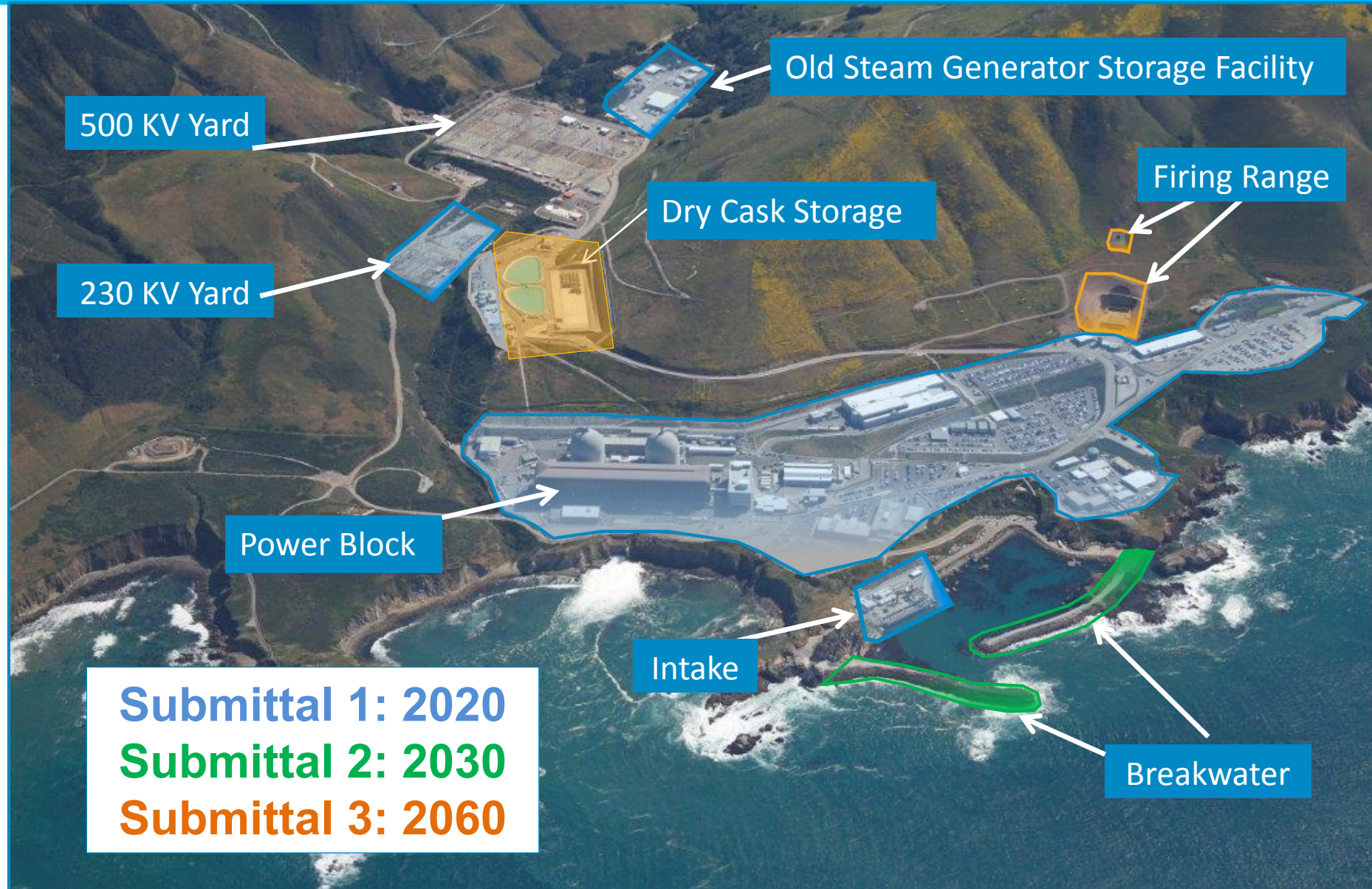
Submittal III:
ISFSI Decommissioning
and Restoration





Permitting Phasing – Based on 2018 NDCTP

(Site Overview: Diablo Canyon Looking East)



500 KV Yard

230 KV Yard

Power Block

Intake

Breakwater

Old Steam Generator Storage Facility

Dry Cask Storage

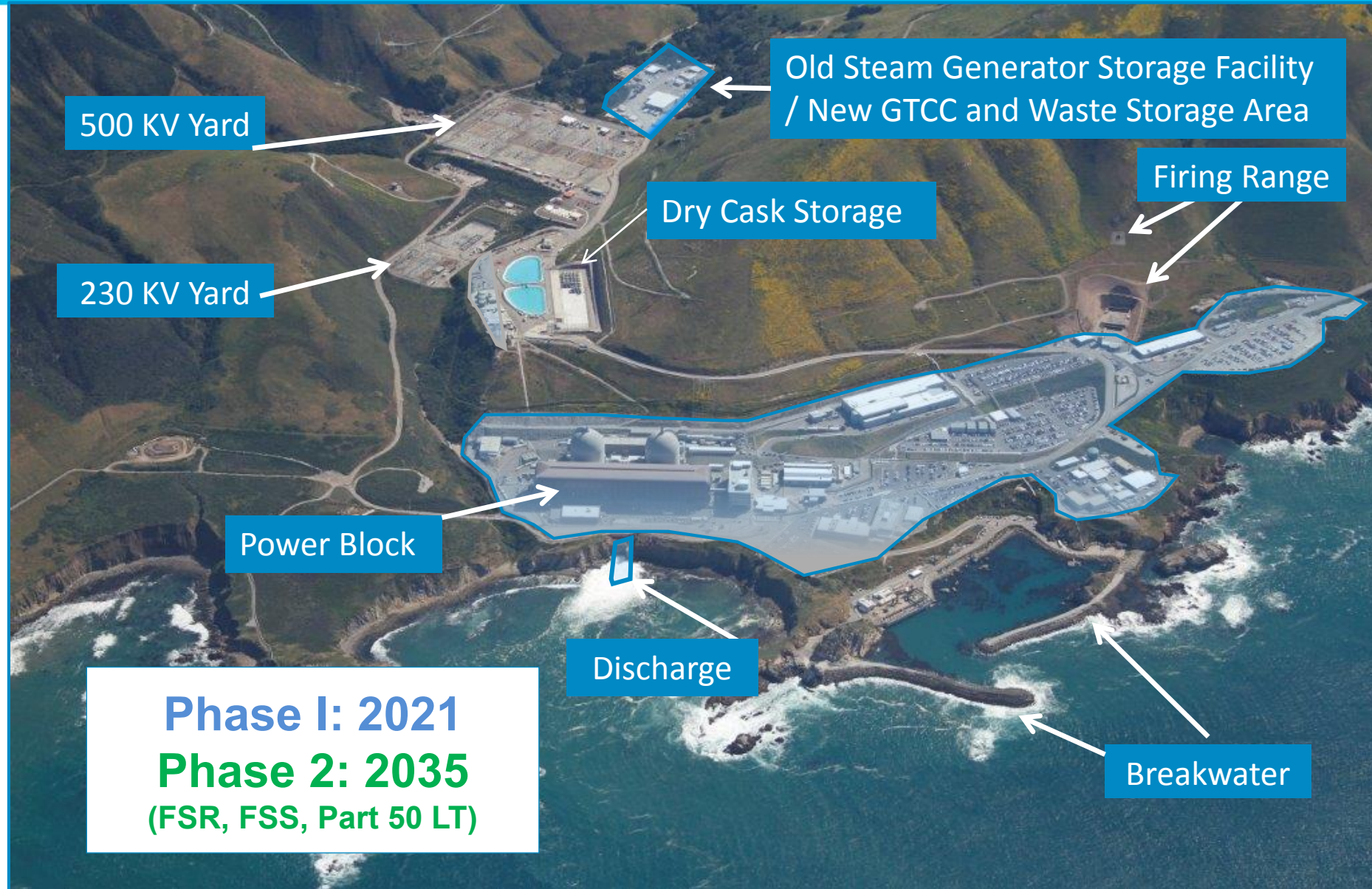
Firing Range

Submittal 1: 2020
Submittal 2: 2030
Submittal 3: 2060



Permitting Phasing – Updated for CDP Application

(Site Overview: Diablo Canyon Looking East)



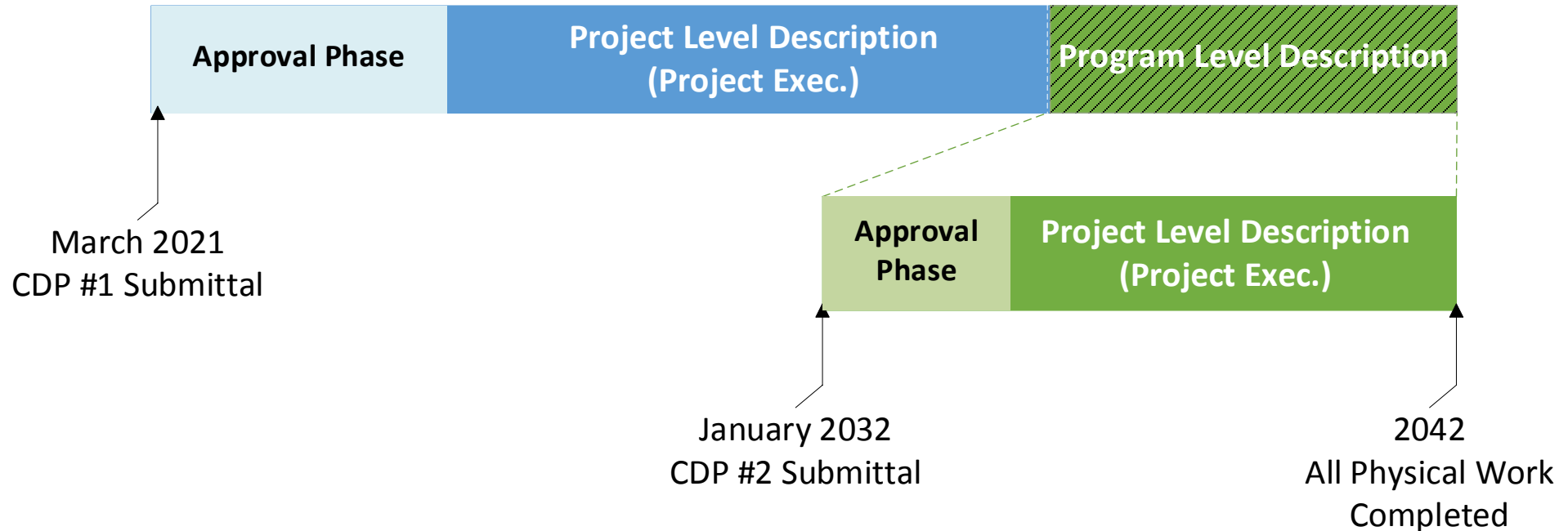
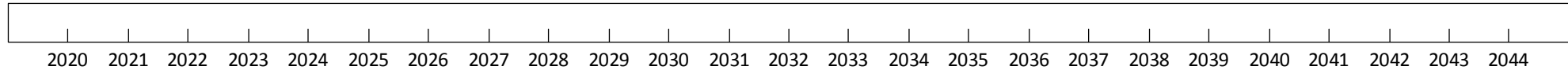
Phase I: 2021
Phase 2: 2035
(FSR, FSS, Part 50 LT)



Permitting Phasing – Updated for CDP Application

Submittal I:
**Pre-Planning and Decommissioning
Project Activities**

Submittal II:
**Final Site Restoration and
Transition to ISFSI-Only**



Thank You

