



**GENERAL LEGEND**

- EXISTING PROPERTY LINE (EX. R)
- LIMIT OF WETLAND MITIGATION AREA
- LIMIT OF RIPARIAN MITIGATION AREA
- PROPOSED WETLAND RESTORATION AREA
- PROPOSED WETLAND ENHANCEMENT AREA
- PROPOSED RIPARIAN RESTORATION AREA
- PROPOSED RIPARIAN AREA CREATION

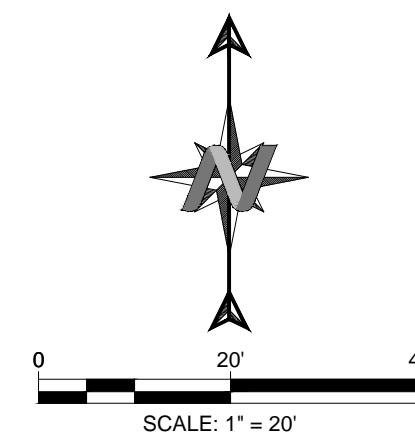
THE APPLICANT IS PROPOSING NONTIDAL WETLAND RESTORATION AND ENHANCEMENT:

MITIGATION SUMMARY						
MITIGATION TYPE	*IMPACT AMOUNT	RESTORATION AMOUNT (SF)	ENHANCEMENT AMOUNT (SF)	CREATION AMOUNT (SF)	TOTAL MITIGATION AMOUNT (SF)	IMPACT TO MITIGATION RATIO
WETLAND	170	170	170	0	340	2:1
RIPARIAN (TEMPORARY)	2,855	2,855	0	0	2,855	1:1
RIPARIAN (PERMANENT)	1,661	0	0	3,322	3,322	2:1
<b>TOTAL</b>	<b>4,686</b>	<b>3,025</b>	<b>170</b>	<b>3,322</b>	<b>6,517</b>	<b>-</b>

\* IMPACT AMOUNTS WERE DETERMINED FROM THE TABLES PROVIDED ON SHEET C1.0.

**NOTES**

- AREAS IMPACTED BY SITES #2 AND #8 SHOWN ON SHEET C1.0 WILL BE MITIGATED AT A 2:1 RATIO. THE "PROPOSED RIPARIAN AREA CREATION" HATCH REPRESENTS THIS MITIGATION AREA.
- WETLAND ENHANCEMENT WILL INCLUDE NEW PLANTING ENHANCEMENTS ALONG A 1 FOOT STRIP LOCATED AT THE UPPER ELEVATION LIMIT OF THE MAPPED WETLAND AREA.



**811**  
Know what's below. Call 811 before you dig.

NOTE: UTILITIES SHOWN WERE PLOTTED FROM OBSERVED EVIDENCE AND PLANS OBTAINED FROM UTILITY PROVIDERS. EXACT LOCATIONS AND QUANTITIES MAY VARY. THE CONTRACTOR SHALL CALL 811 FOR UTILITY LOCATING SERVICES PRIOR TO EXCAVATION AND USE EXTREME CAUTION WHEN EXPOSING UTILITIES. ANY DAMAGE TO EXISTING UTILITIES WILL BE THE SOLE RESPONSIBILITY OF THE CONTRACTOR.

saved: 10/23/2019, 10:23:20 AM, plotter: s:\projects\emg\1018033\envo\_station\_ontario\_rd\_king\_ventures\_also\drawings\mitigation\_plan.dwg

NO.	DATE	REVISIONS

**WE WALSH ENGINEERING**  
 WALSHENGINEERING.NET (805) 319-4948  
 1108 GARDEN STREET, SUITE 202-204 SAN LUIS OBISPO, CA 93401

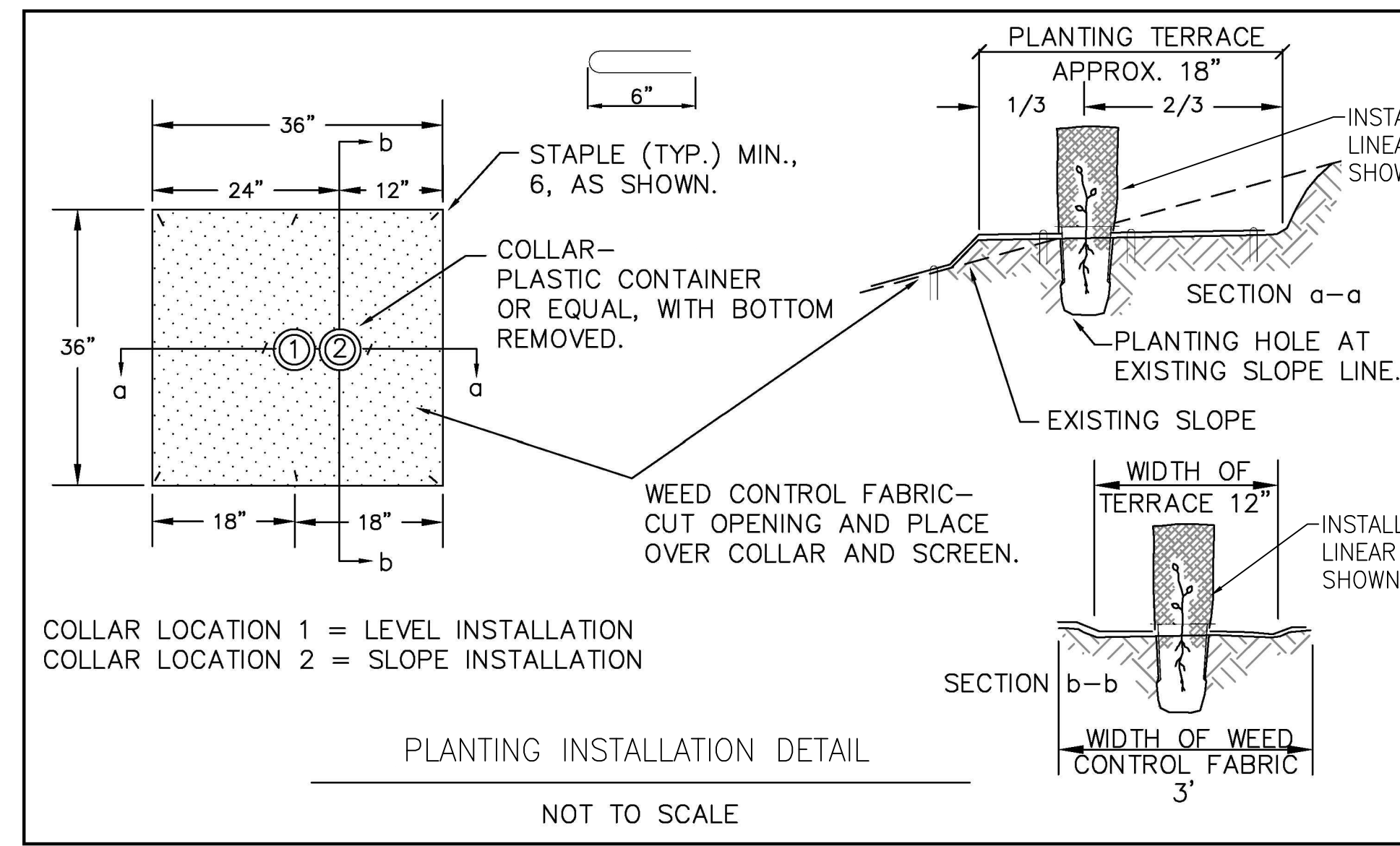
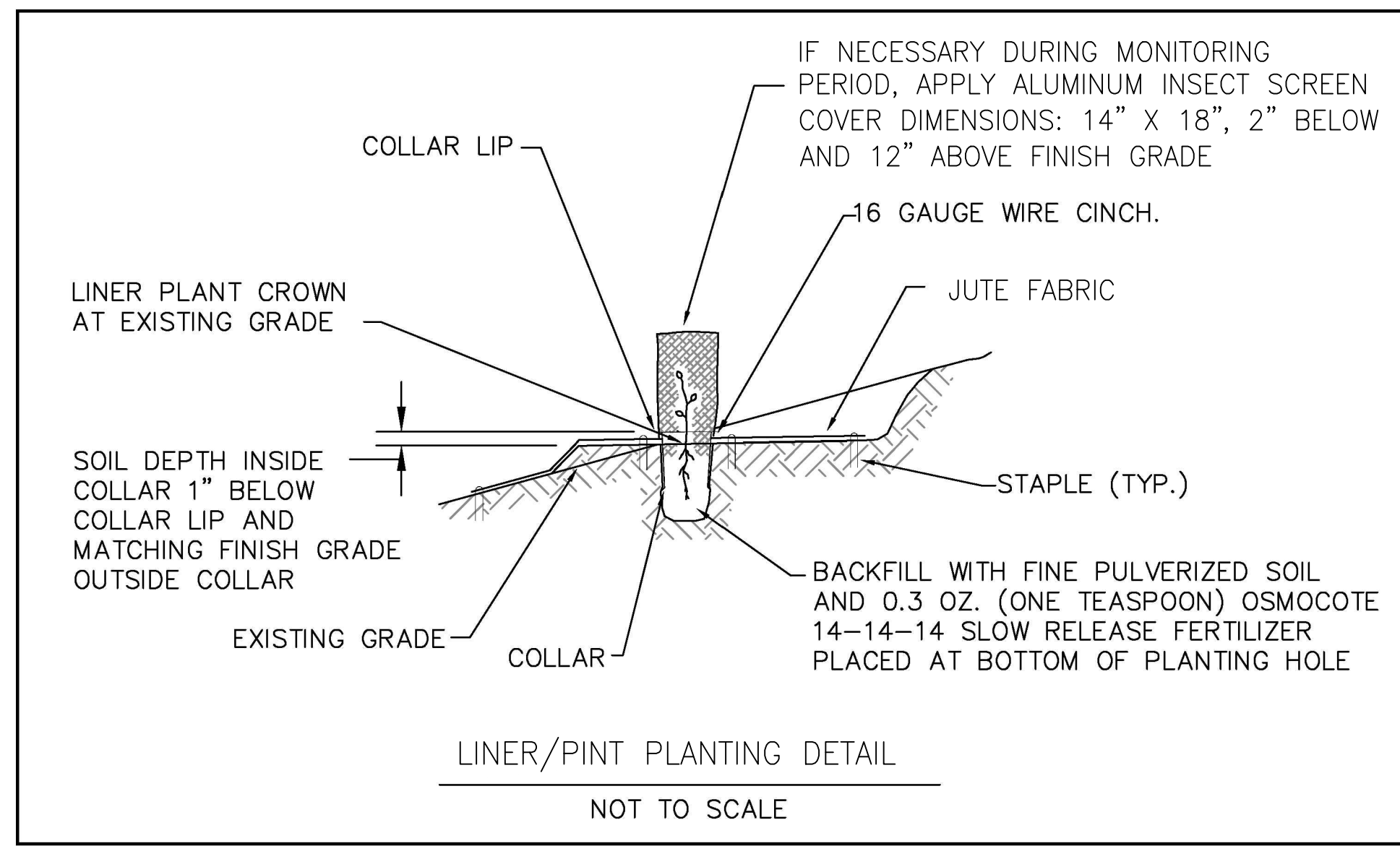
APN 076-261-028  
**RESTORATION & ENHANCEMENT PLAN**  
 6900 ONTARIO ROAD AVILA BEACH, CA 93424



DESIGNED BY: DAP  
 DRAFTED BY: KDG  
 CHECKED BY: MRW  
 DATE: 10/23/2019

MITIGATION PLAN OVERLAY

SHEET  
**C2.1**



PLANT TABLE					
SYMBOL	SCIENTIFIC NAME	COMMON NAME	NUMBER OF PLANTS	CONTAINER SIZE	SPACING (F.O.C.)
NATIVE RIPARIAN PLANTINGS					
⊙	<i>ROSA CALIFORNICA</i>	CALIFORNIA ROSE	16	1 GALLON	6'
⊗	<i>RHAMNUS CALIFORNICA</i>	COFFEE BERRY	14	1 GALLON	6'
⊗	<i>SALIX LASIOLEPIS OR SALIX LAEVIGATA</i>	ARROYO WILLOW OR RED WILLOW	80	14"± CUTTING	3'
NATIVE WETLAND PLANTINGS					
⊕	<i>JUNCUS</i>	RUSH	14	LINER OR PINT	3'
*	<i>CAREX</i>	SEDGE	14	LINER OR PINT	3'
⊙	<i>CYPERUS ERAGROSTIS</i>	TALL FLATSEDGE	14	LINER OR PINT	3'
TOTAL:			152		
GRASSES					
▨	HYDROSEED MIX (PER SPECIFICATIONS BELOW)		TBD		



saved: 10/23/2019, 10:23:20 AM, path: s:\projects\emg\2018033\_0190\_station\_ontario\_rd\_king\_ventures\_also\drawings\mitigation\_plant.dwg

NO.	DATE	REVISIONS
△		
△		
△		
△		

**WE WALSH ENGINEERING**  
 WALSHENGINEERING.NET (805) 319-4948  
 1108 GARDEN STREET, SUITE 202-204 SAN LUIS OBISPO, CA 93401

APN 076-261-028  
 RESTORATION & ENHANCEMENT PLAN  
 6900 ONTARIO ROAD AVILA BEACH, CA 93424

DESIGNED BY: DAP  
 DRAFTED BY: KDG  
 CHECKED BY: MRW  
 DATE: 10/23/2019

**PLANTING PLAN**

**C3.0**

REGISTERED PROFESSIONAL ENGINEER  
 MATTHEW R. WALSH  
 C79026  
 CIVIL  
 STATE OF CALIFORNIA

NOTE: UTILITIES SHOWN WERE PLOTTED FROM OBSERVED EVIDENCE AND PLANS OBTAINED FROM UTILITY PROVIDERS. EXACT LOCATIONS AND QUANTITIES MAY VARY. THE CONTRACTOR SHALL CALL 811 FOR UTILITY LOCATING SERVICES PRIOR TO EXCAVATION AND USE EXTREME CAUTION WHEN EXPOSING UTILITIES. ANY DAMAGE TO EXISTING UTILITIES WILL BE THE SOLE RESPONSIBILITY OF THE CONTRACTOR.

811 Know what's below. Call 811 before you dig.